

5 PRINCIPLES OF RESPONSIBLE LIGHTING - LIGHTING SHOULD USE THE APPROPRIATE LIGHT LEVEL

WHICH SPACE DO YOU THINK HAS MORE LIGHT?



Did you pick this one? If so – you’re right!
This single light source in this alley is putting out 10 times as much light as the pedestrian lights in the photo to the left - but doesn’t it seem dark?
When it comes to light, better light is more important for visibility and safety than brighter lights.

Did you pick this one? If so – guess again!
These pedestrian lights all have a lower light output than the photo on the left, but are creating a better quality of lighting for this neighborhood.
When it comes to light, better light is more important for visibility and safety than brighter lights.

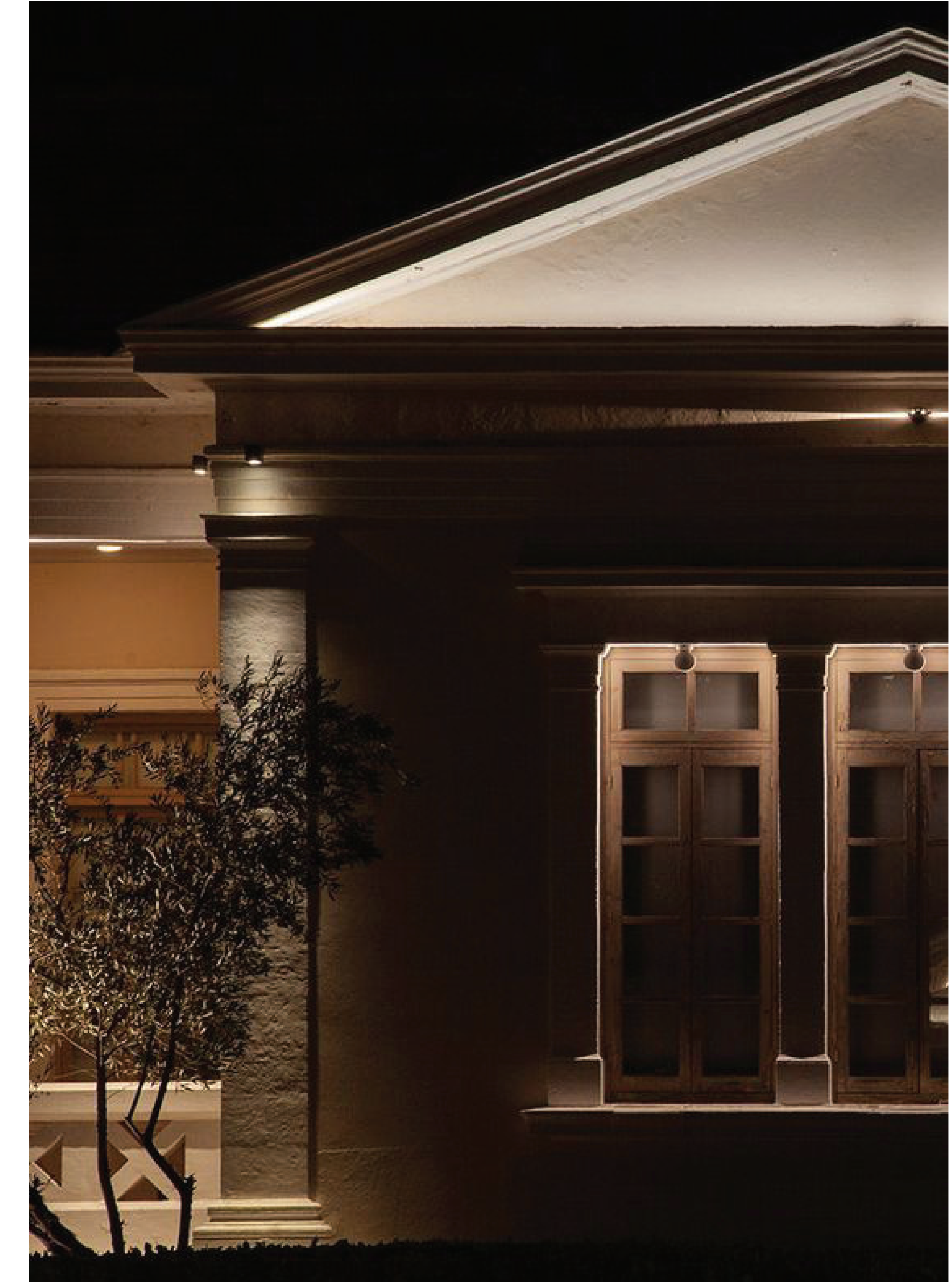
BETTER NOT BRIGHTER

What makes a light level appropriate?

- The appropriate light level for a space is determined by the land uses, pedestrian activity levels at night, and nearby street types
- Our eyes can adapt to darker spaces at night when given enough time to adjust from a brighter indoor space, but we all need enough light to understand what’s around us.
 - Areas with more activity at night, like a commercial corridor, require more light for safe visibility.
 - Areas with less activity at night, like a residential neighborhood, do not need as much outdoor light.

How can this make outdoor lighting better?

- Useful light is like filling a cup with water. Once the cup is full, adding more to it is not useful. It spills over where it’s not wanted.
- The Department of Energy estimates almost 99% of outdoor lighting in America is wasted. This expense burdens household and business budgets.
- Finding the appropriate light level for an area in the Town and sticking to it makes lighting more efficient, sustainable, and consistent for everyone.



The lighting on this home enhances its character at night, and is dim enough it doesn’t impact the adjacent landscaping.

HOW DOES THIS PRINCIPLE IMPACT THE TOWN OF VIENNA?

The new lighting ordinance will establish light levels that follow current national guidelines for public safety and sustainability. These will be matched to the Town’s zones and character districts to ensure quality lighting for each area. These light levels will help with:

- Reducing overlighting and improving lighting consistency throughout the Town
- Measuring when light fixtures are too bright or too dim for an area
- Managing glare and light trespass in the Town

Are there places in the Town you feel are too dark or too bright? Does the amount of light you see around your neighborhood feel similar or very different?

Tell us about it - be sure to take the Town’s Outdoor Lighting Survey!



Using layers of lighting in a space can improve aesthetics while ensuring different activities are being lit appropriately with less light.



The Bortle Scale is a way to measure night sky quality. Using appropriate light levels is one important way to protect the night sky. Which category does the Town feel like to you? Which sky would you like to see? A Town in a metropolitan region needs outdoor lighting, a 2 is not feasible, but neither is a 7 inevitable. We can do better.