

TREE#648  
26" KWANZAN CHERRY  
IN POOR CONDITION. IVY;  
DECAY; OVER-PRUNED;  
MULTISTEM. TO BE  
REMOVED.



TREE#649  
42" KWANZAN CHERRY  
IN FAIR CONDITION.  
DECAY THROUGHOUT;  
MULTISTEM. TO BE  
REMOVED.



TREE#652  
2" CHERRY  
IN GOOD CONDITION.  
POSSIBLE TRANSPLANT.



TREE#654  
9" CHERRY  
IN FAIR CONDITION.  
TO BE REMOVED.



TREE#656  
5" CRAPE MYRTLE  
IN EXCELLENT CONDITION.  
MULTISTEM.



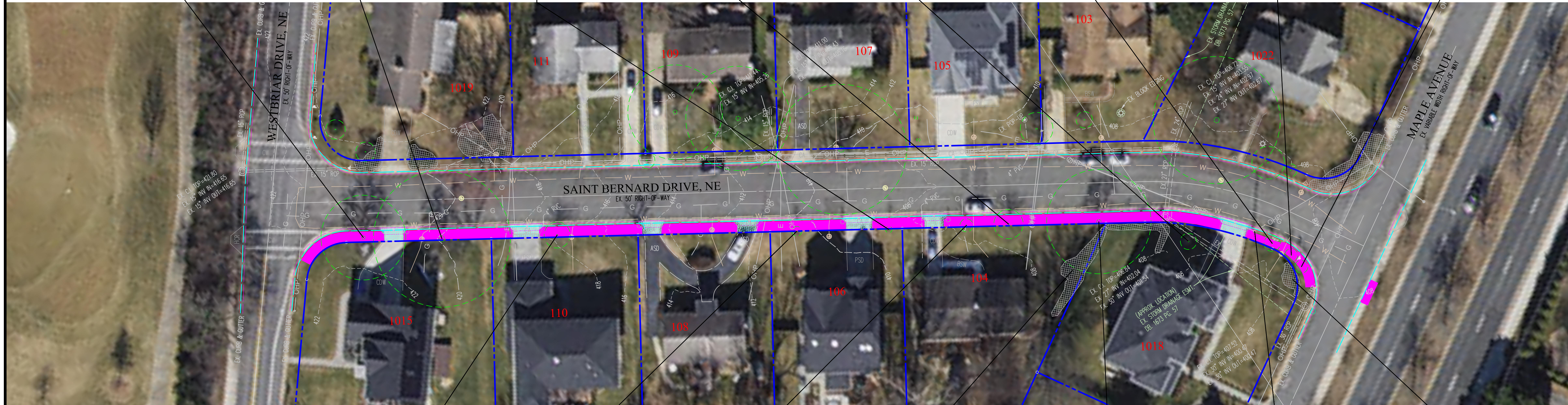
TREE#657  
3" YOSHINO CHERRY  
IN EXCELLENT CONDITION.  
TO BE REMOVED.



TREE#658  
4" WILLOW OAK  
IN GOOD CONDITION.  
TO BE REMOVED.



TREE#659  
4" WILLOW OAK  
IN EXCELLENT CONDITION.  
TO BE REMOVED.



TREE#650  
8" KWANZAN CHERRY  
IN FAIR CONDITION.  
TO BE REMOVED.



TREE#651  
3" CHERRY  
IN GOOD CONDITION.  
POSSIBLE TRANSPLANT.



TREE#653  
4" CHERRY  
IN FAIR CONDITION.  
DECAY; TO BE  
REMOVED.



HEDGEROW OF CHERRY  
LAUREL (10' TALL)



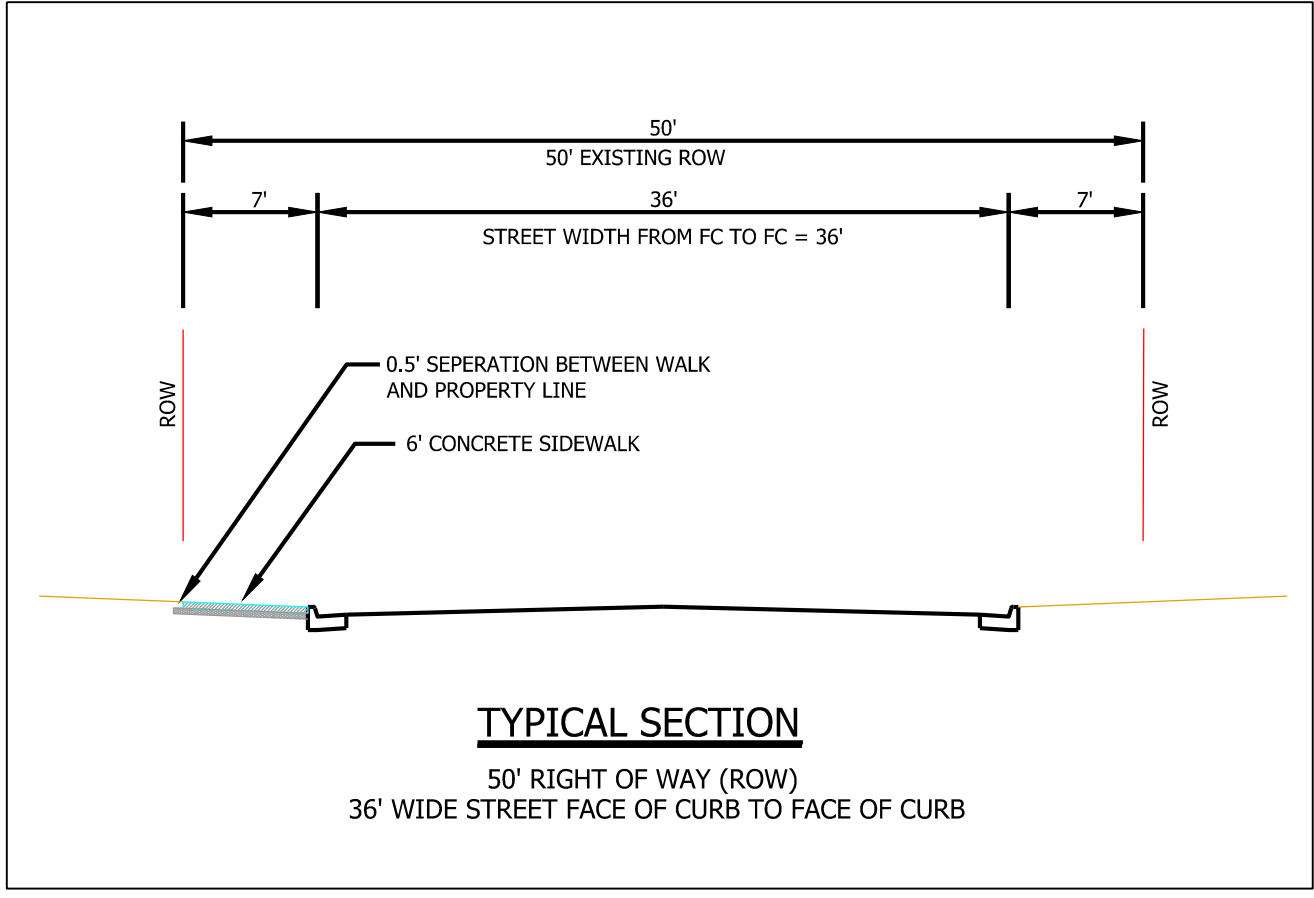
TREE#655  
32" CHERRY  
IN POOR CONDITION.  
MULTISTEM; DECAY.  
TO BE REMOVED.



EXISTING UTILITY POLE TO  
REMAIN.



VARIOUS SHRUBS:  
HOLLY, HYDRANGEA,  
ROSE

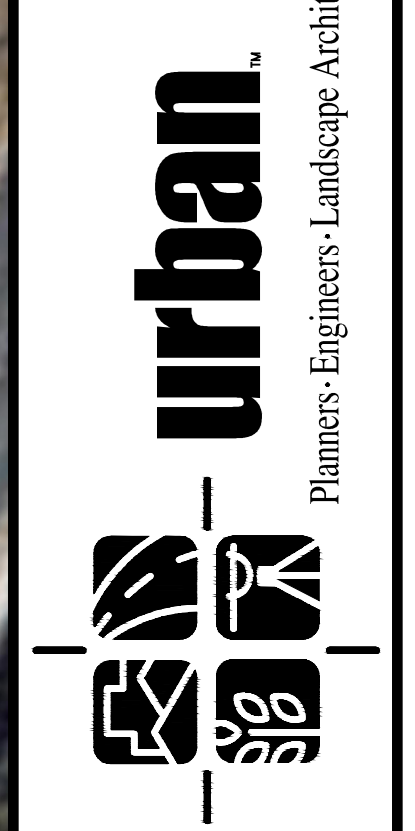


CONCEPT 2  
SIDEWALK ALONG SOUTH SIDE OF ST BERNARD DR NE. THE SIDEWALK WILL EXTEND FROM THE MAPLE AVE E INTERSECTION TO THE WESTBRIAR DR NE INTERSECTION.

NO.	DATE	DESCRIPTION	REVIEWED	DATE

PLAN DATE  
12/13/2023  
01/26/2024

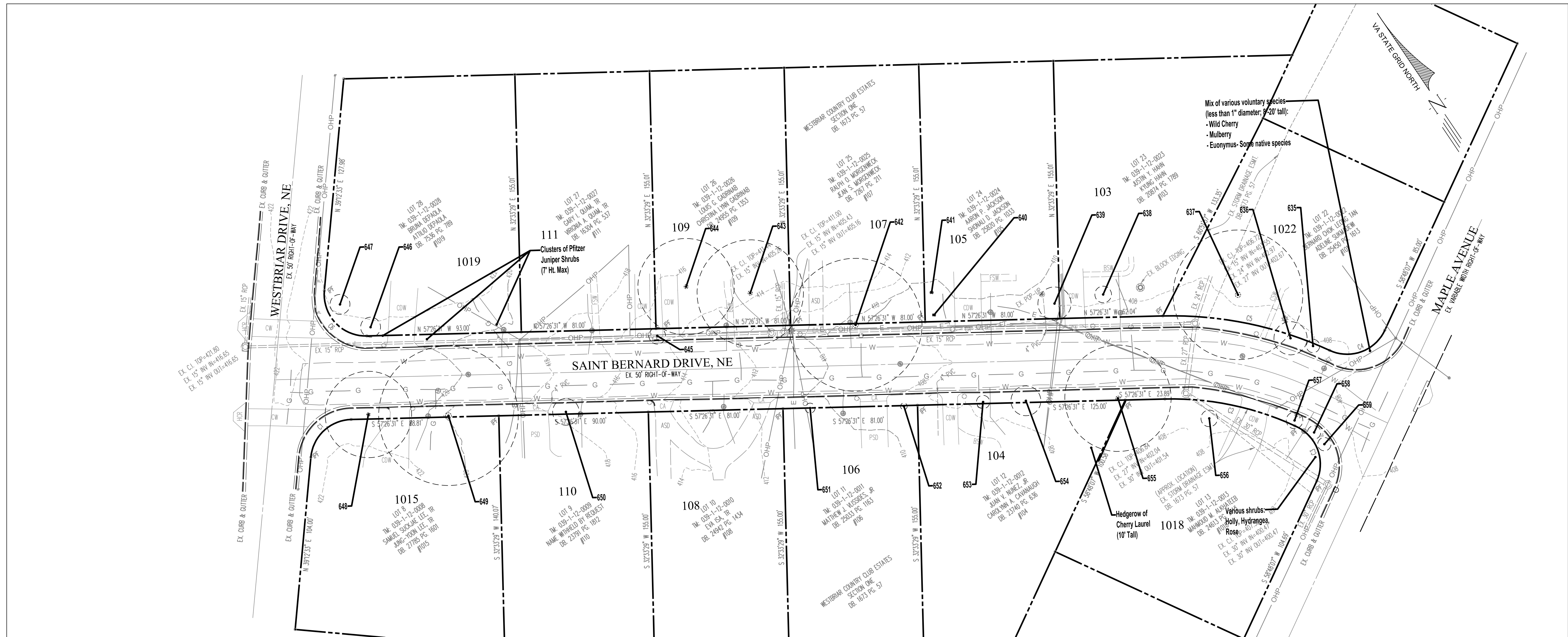
Urban Ltd.  
7120 Lee River Turnpike  
Annandale, Virginia 22003  
Tel: 703.642.8080  
Fax: 703.642.8251  
www.urban-llc.com



CONCEPT 2  
ST. BERNARD DRIVE NE  
CONCEPT STUDY  
TOWN OF VIENNA  
FAIRFAX COUNTY, VIRGINIA  
SCALE: 1"=30'  
DATE: DECEMBER, 2023

SHEET  
2  
OF  
4  
FILE No.  
PP-2593





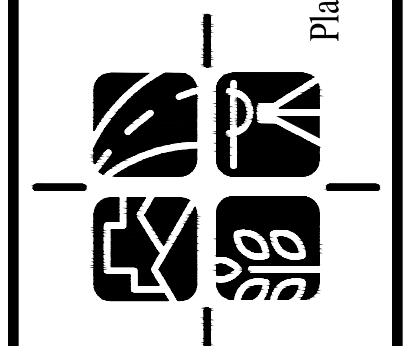
TREE INVENTORY & CONDITION ANALYSIS					
TREE NO.	SPECIES	SIZE	CRZ	CONDITION RATING	COMMENTS
	Common Name	DBH (in)	R (ft.)	%	
635	Cherry	4"	4'	37.50	Decay throughout
636	Cherry	10"	10'	53.13	
637	Red Maple	39"	39'	59.38	Codominant trunk; raised planting base suggests formerly within a planting bed.
638	Japanese Maple	5"	5'	65.63	
639	Crape Myrtle	48"	10'	75.00	Multistem
640	Red Maple	1"	1'	65.63	
641	Red Maple	1"	1'	43.75	Trunk damage
642	Cherry	40"	40'	12.50	Major decay; nearly dead
643	Southern Magnolia	32"	32'	46.88	Branch decay; twisted trunk
644	Sweetbay Magnolia	29"	29'	43.75	Trunk and branch decay
645	Eastern Red Cedar	5' Ht.	5' Width	46.88	Trained / trimmed to shrub size
646	Flowering Dogwood	6"	6'	50.00	
647	Norway Spruce	6"	6'	90.63	
648	Kwanzan Cherry	26"	26'	37.50	lv; decay; over-pruned; multistem
649	Kwanzan Cherry	42"	42'	43.75	Decay throughout; multistem
650	Kwanzan Cherry	8"	8'	53.13	
651	Cherry	3"	3'	78.13	
652	Cherry	2"	2'	62.50	
653	Cherry	4"	4'	46.88	Decay
654	Cherry	9"	9'	59.38	
655	Cherry	32"	32'	37.50	Multistem; decay
656	Crape Myrtle	5"	5'	84.38	Multistem
657	Yoshina Cherry	3"	3'	84.38	
658	Willow Oak	4"	4'	68.75	
659	Willow Oak	4"	4'	81.25	

TREE INVENTORY AND CONDITION ANALYSIS  
**ST. BERNARD DRIVE NE**  
 CONCEPT STUDY  
 TOWN OF VIENNA  
 FAIRFAX COUNTY, VIRGINIA

DATE: DECEMBER, 2023  
 SCALE: 1" = 30'

SHEET  
 4  
 OF  
 4

FILE No.  
 PP-2593



Urban Ltd  
 7120 Lee Blvd, Dumfries  
 Alexandria, Virginia 22003  
 Tel: 703.642.8080  
 Fax: 703.642.8251  
 www.urban-llc.com

PLAN DATE	DESCRIPTION	REVIEW APPROVED	DATE
12/13/2023			
01/26/2024			

No.	DATE	DESCRIPTION	REVISIONS