

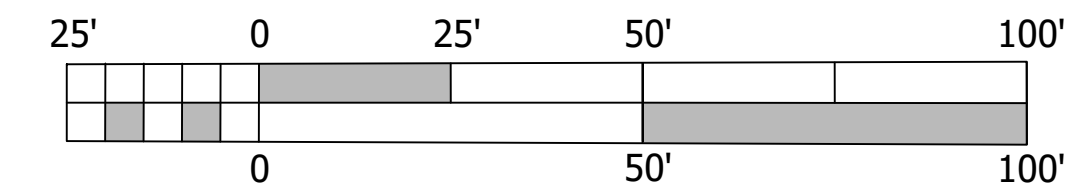
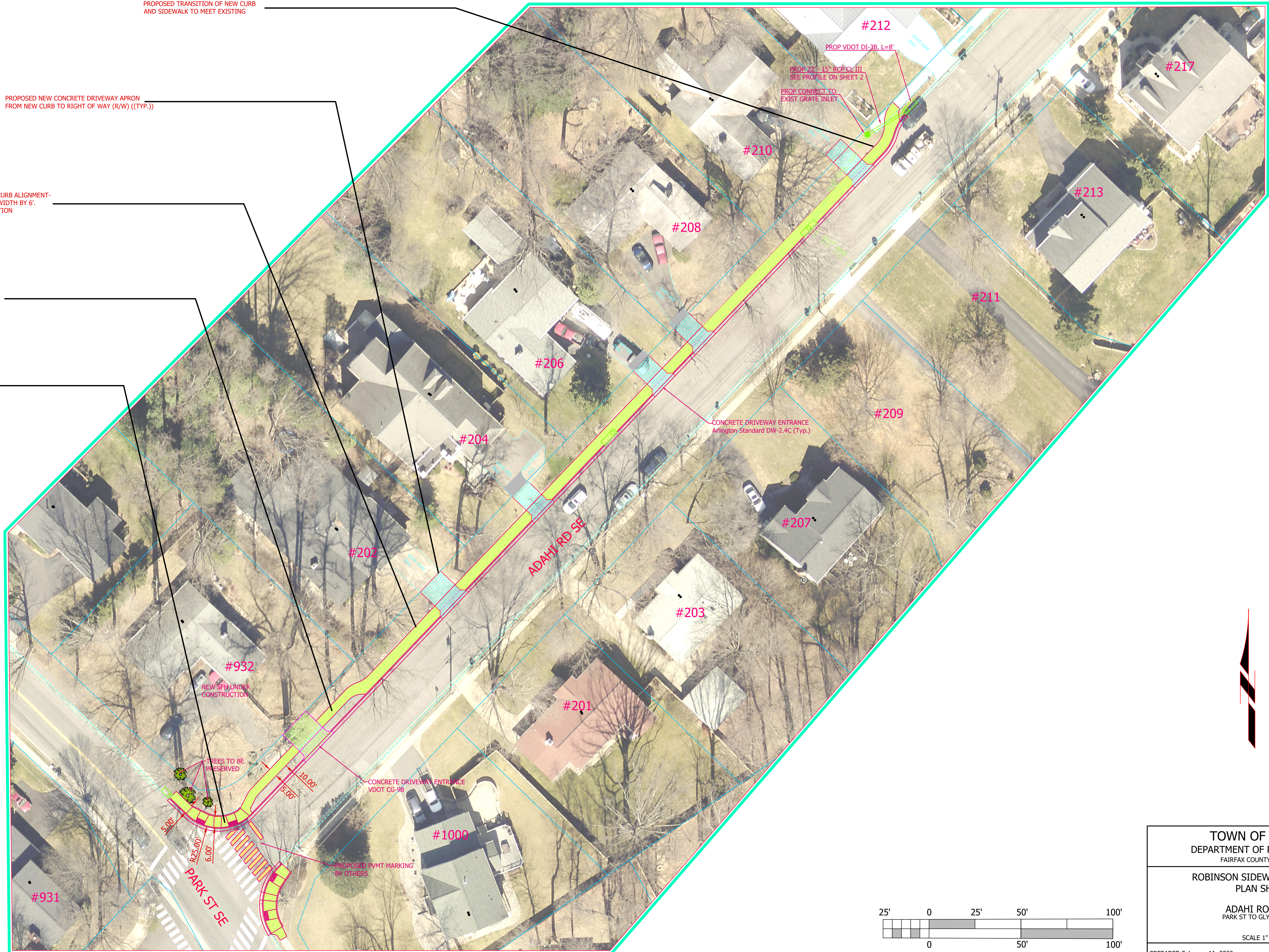
PROPOSED TRANSITION OF NEW CURB AND SIDEWALK TO MEET EXISTING

PROPOSED NEW CONCRETE DRIVEWAY APRON FROM NEW CURB TO RIGHT OF WAY (R/W) ((TYP.))

PROPOSED NEW CURB ALIGNMENT- REDUCE STREET WIDTH BY 6'. SEE TYPICAL SECTION

PROPOSED NEW 5' WIDE CONCRETE SIDEWALK AND UTILITY STRIP

PROPOSED NEW CURB RETURN WITH NEW ADA STANDARD CURB RAMPS



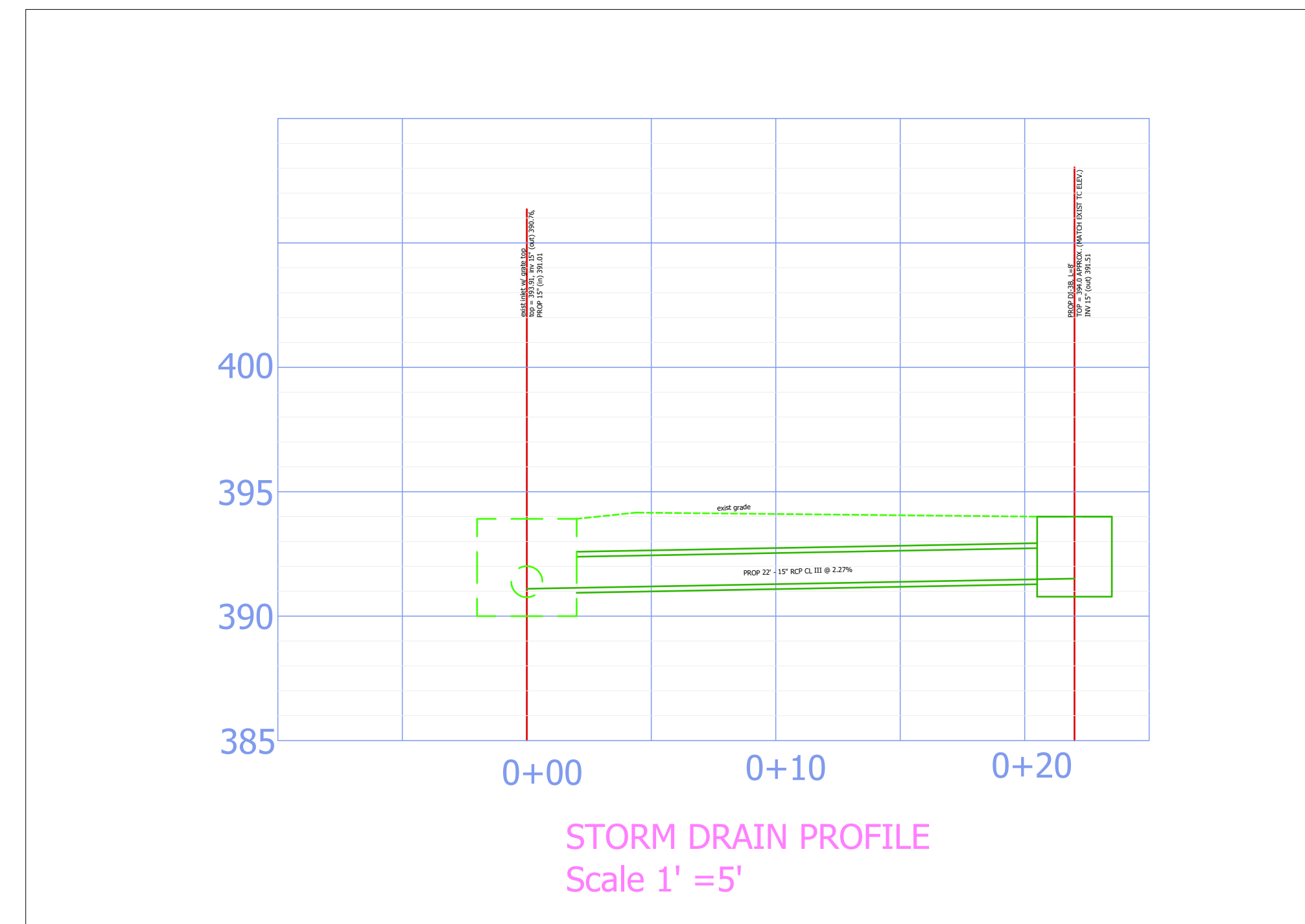
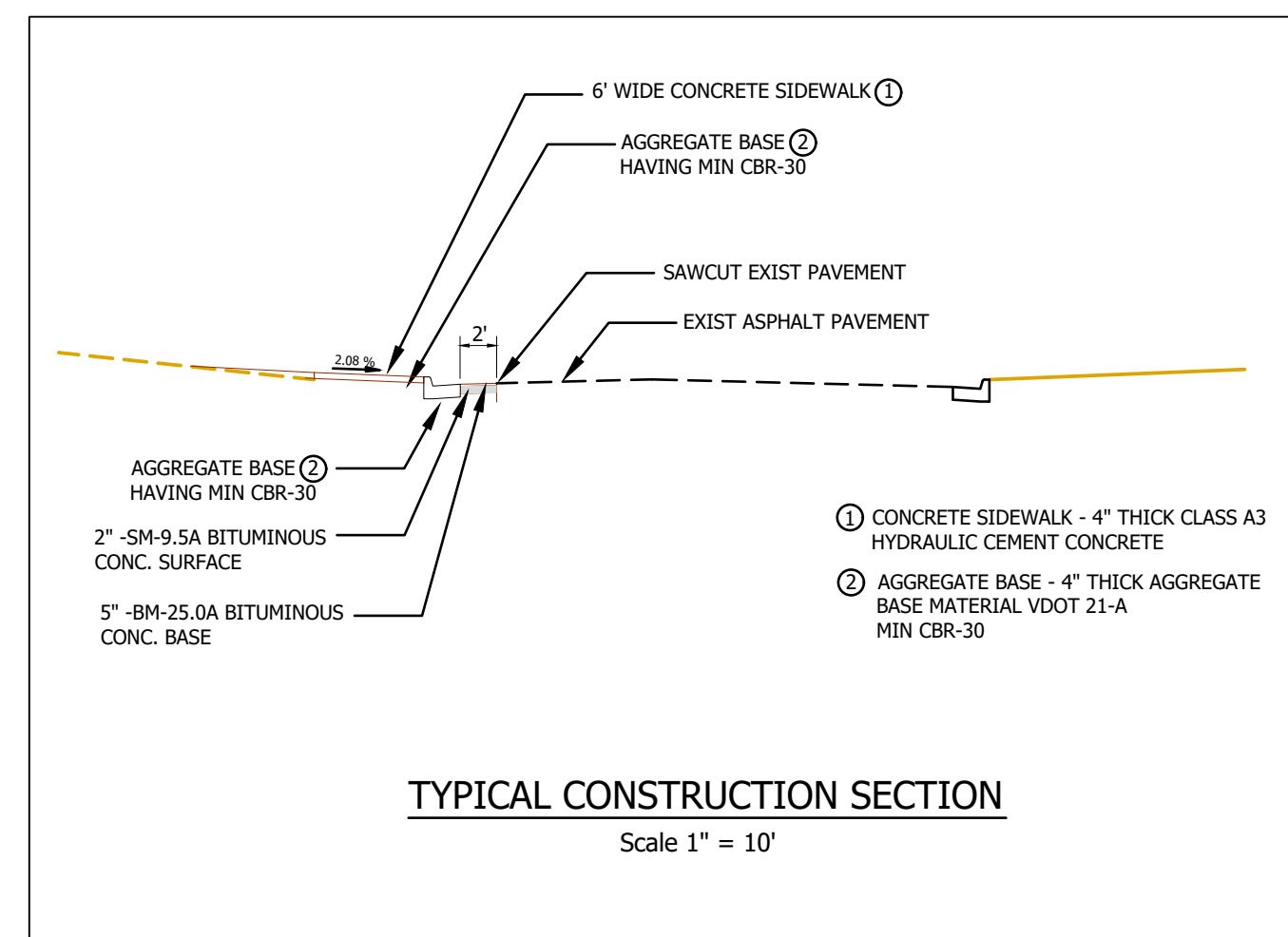
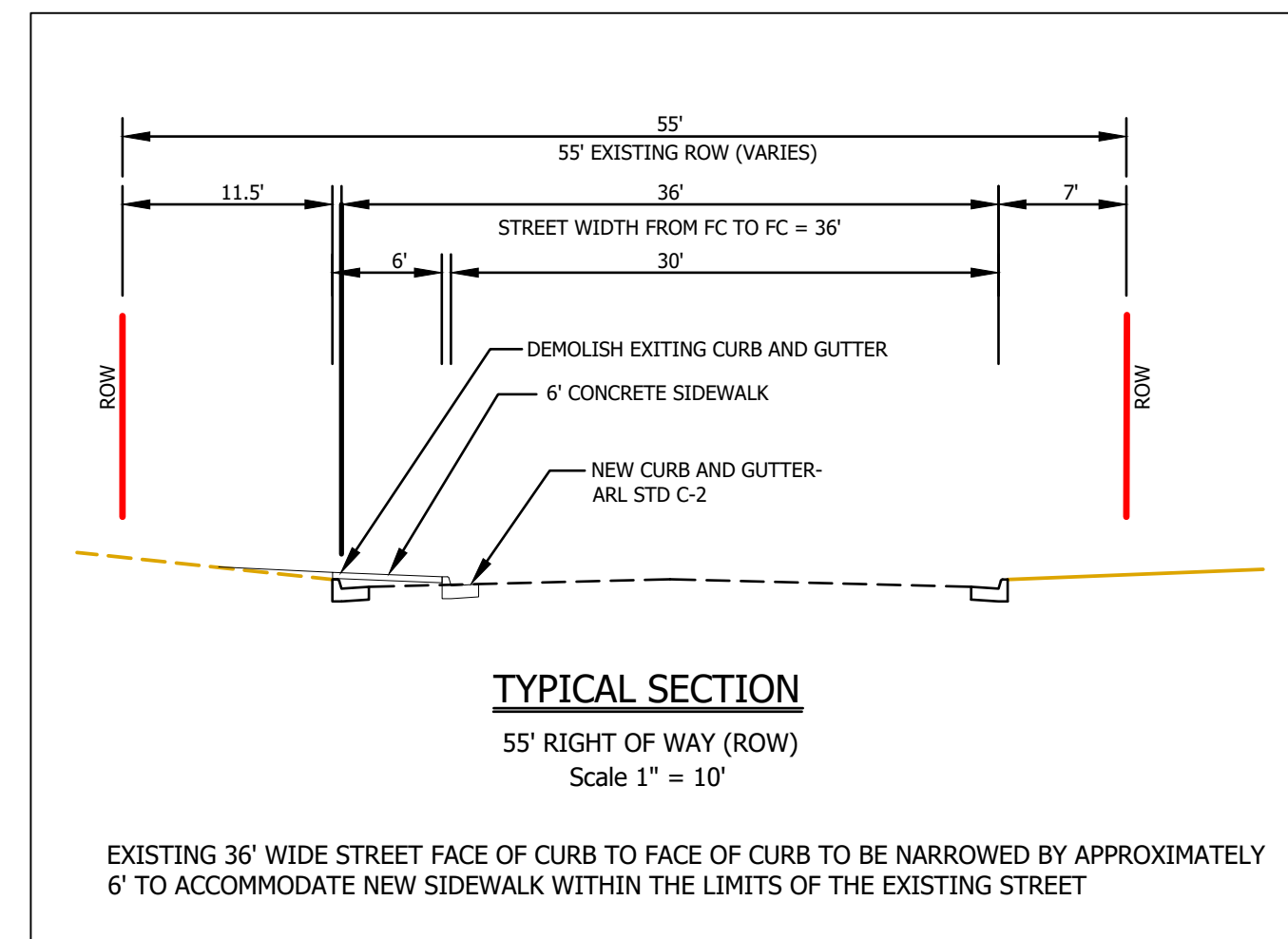
TOWN OF VIENNA
 DEPARTMENT OF PUBLIC WORKS
 FAIRFAX COUNTY, VIRGINIA

ROBINSON SIDEWALK PROGRAM
 PLAN SHEET

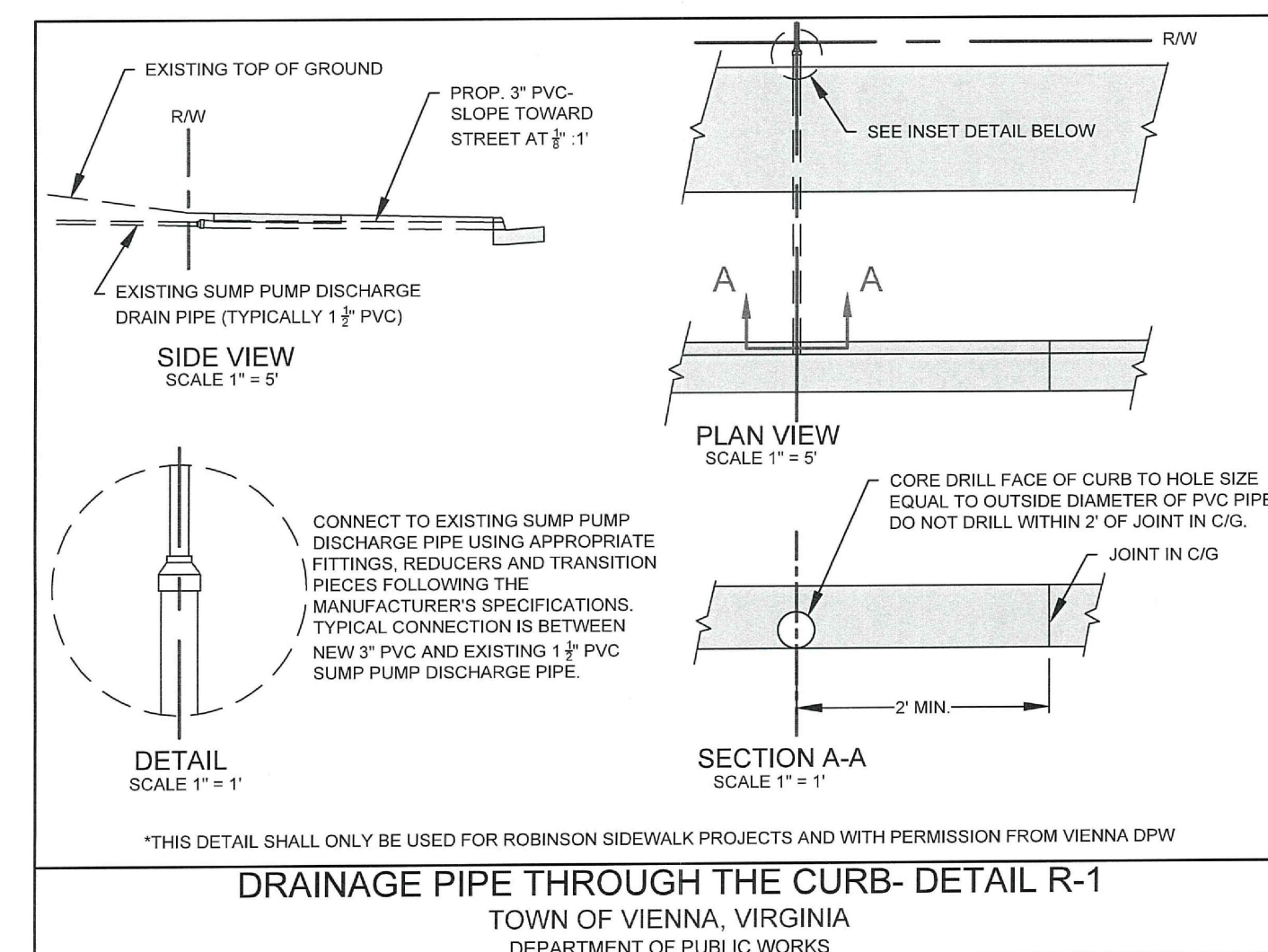
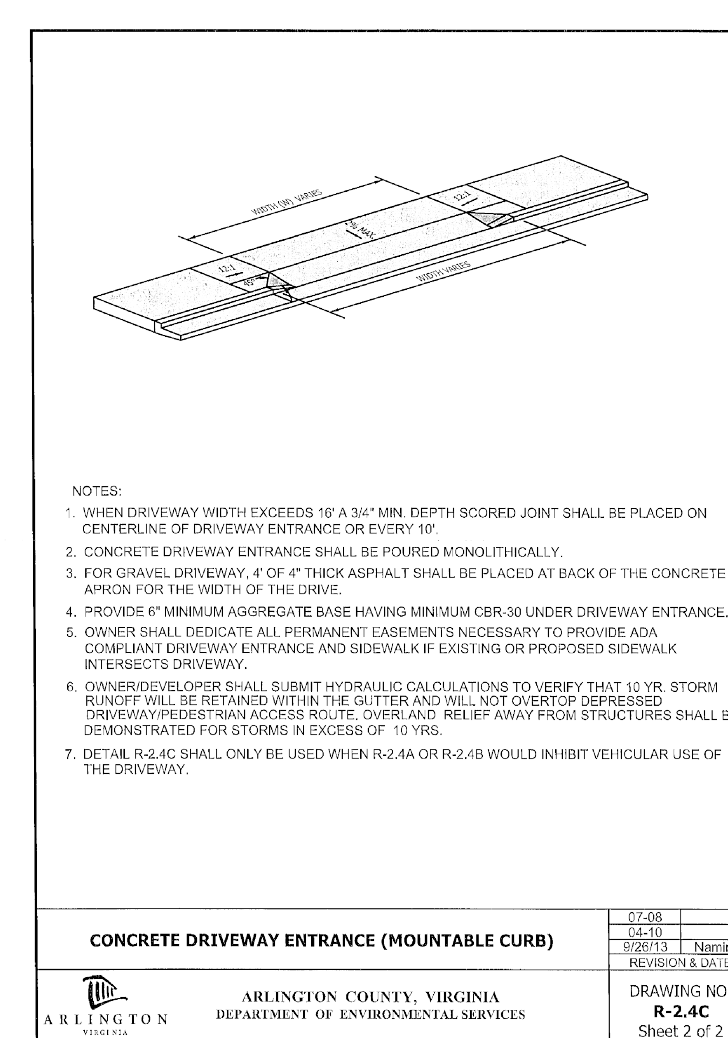
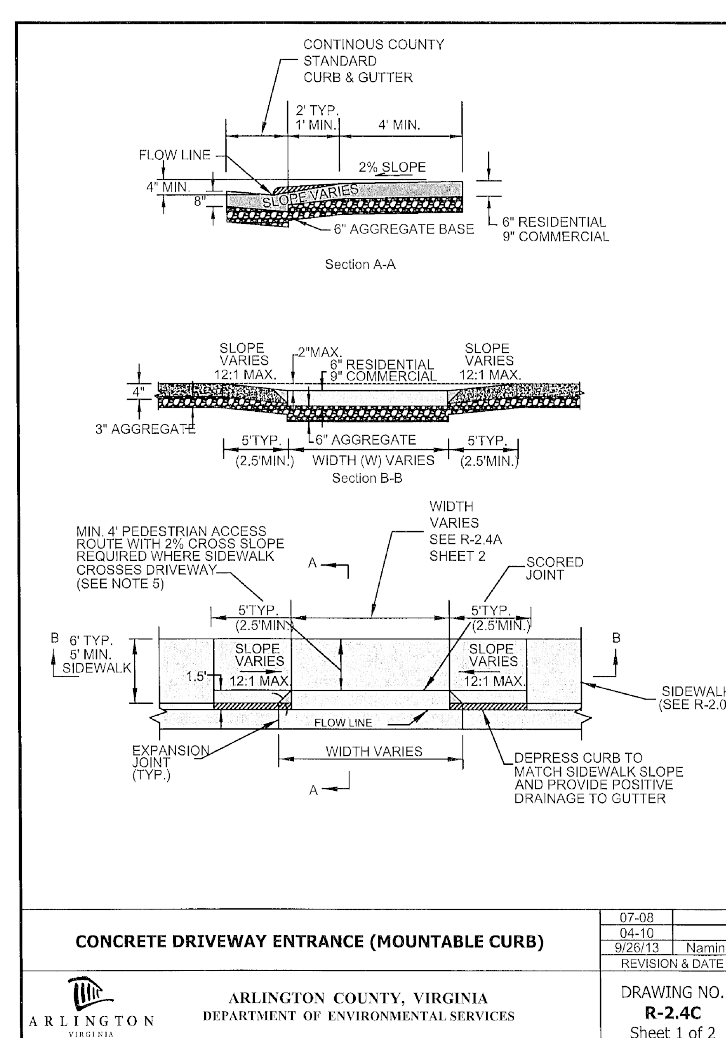
ADAHI ROAD SE
 PARK ST TO GLYNDON ST

SCALE 1" = 25'

PREPARED February 11, 2022 SHEET 1 of 3



CURVE TABLE			
CURVE #	①	②	③
Delta	90°0'0"	28°21'27"	28°21'27"
Radius	25.00'	25.00'	25.00'
Arc Length	39.27'	12.37'	12.37'
Tangent	25.00'	6.32'	6.32'



TOWN OF VIENNA
DEPARTMENT OF PUBLIC WORKS
FAIRFAX COUNTY, VIRGINIA

**ROBINSON TRUST SIDEWALK
DETAIL SHEET**

ADAHI ROAD SE
PARK ST TO GLYNDON ST