



# CHAPTER 7 PARKS AND RECREATION







## Goals

- Maintain Town parks and facilities to facilitate maximum use
- Design, build, and program parks and recreational facilities to meet the needs and desires of Town residents
- Create and update Park Master Plans

## Introduction

The Town's parks and recreation programs are a vital part of Vienna's community and provide various opportunities for residents. It is essential that these programs and parks continue to provide for the community and that future goals and recommendations are realized to help ensure their success.

To outline current conditions and future goals and policies, this Parks and Recreation chapter has been added to the 2015 Comprehensive Plan.

### Department of Parks and Recreation

The Department of Parks and Recreation is responsible for maintaining the Town's parks and streetscapes, maintaining and operating the Town's Community Center, and running recreational programs and town-wide annual events. The Department currently staffs 131 employees. The Department also helps preserve designated historic properties.

Its stated goal is to create community through people, parks, and programs.

### Users of Parks, Facilities and Programs

The Town primarily serves residents within the boundaries of the Town of Vienna. However many of the parks, facilities, and recreational fields are also open to and used by Fairfax County residents outside of the corporate border.

Although the Town itself only has a population of roughly 16,000, the parks and recreational programs are accessible to a far wider population. Within a three mile radius of the Town Green there are approximately 110,000 persons (based on a GIS analysis of 2010 Census Blocks). Within a five mile radius there are approximately 236,000 persons.

### Town Annual Events



Oktoberfest



Halloween Parade



First Night



Viva! Vienna!



## Parks and Recreational Facilities

Within Town limits there are multiple types of parks and facilities. Public parks include Town owned parks, Fairfax County Parks and a trail/park system owned and maintained by NOVA Parks. Additionally, Fairfax County operates several parks and facilities bordering the Town. There are also several private parks and recreational facilities, including a golf club and swimming pools.

### Town Parks and Recreational Facilities

There are currently 14 parks located in the Town of Vienna. Eleven of these are owned and operated by the Town. Waters and Caffi Fields are maintained and operated by the Town but are owned by the Fairfax County School Board. The [Washington and Old Dominion Railroad Regional Park](#) (W&OD Trail) is owned and operated by the NOVA Parks. Brief descriptions of these parks are provided, listed in no particular order.

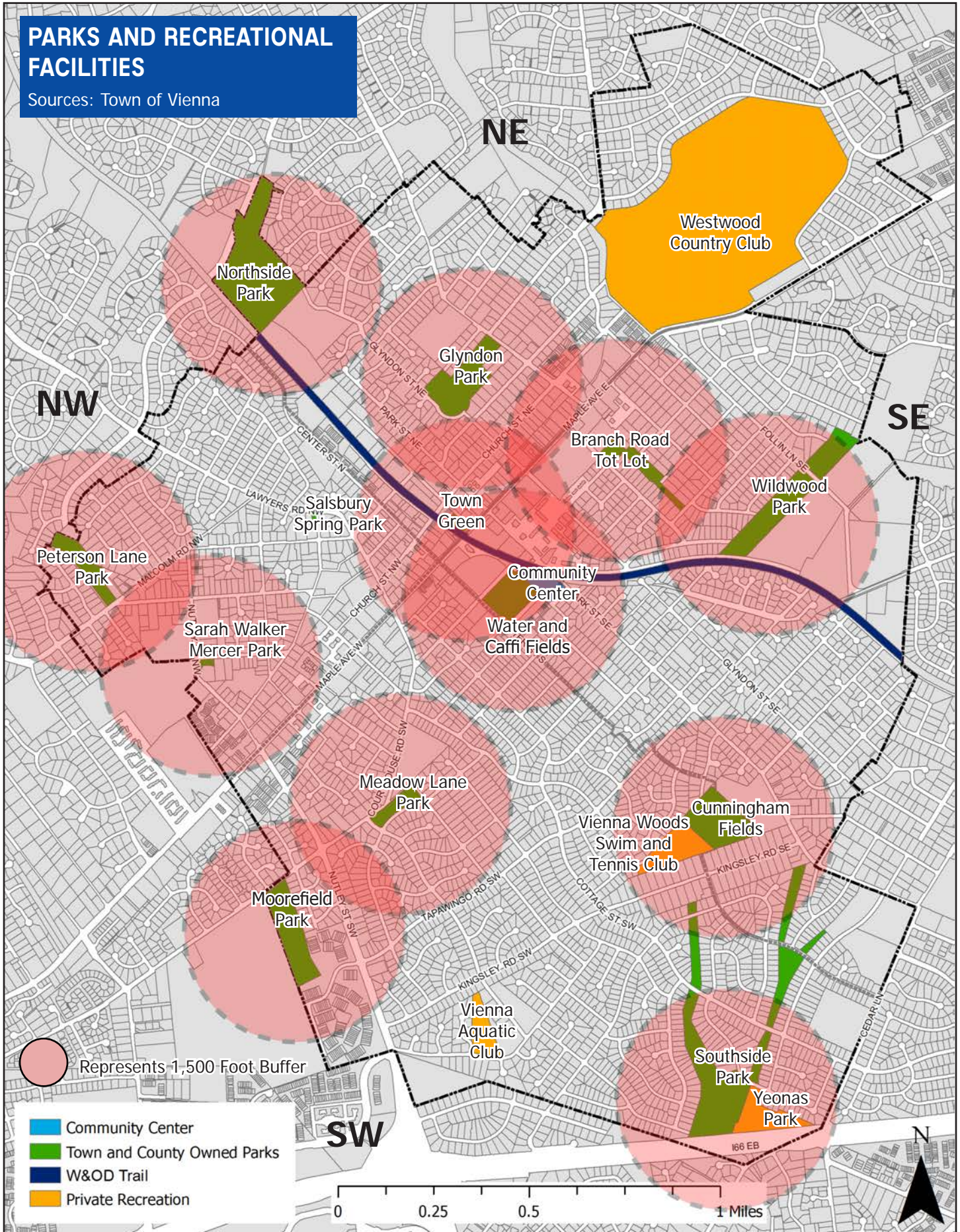
### Service Gaps

Several “service gaps” exist in Town. Service gaps are defined as areas where residents do not have access to Town parks within a 5-10 minute walk from their homes. The map on [Page 120](#) shows these gaps. Salsbury Spring was not included in this analysis due to its use as a passive park. The Town should consider ways to expand parks and recreational options in areas not located within close walking distance of existing parks.

A parks master plan study could also find other service gaps and could help in creating a park typology (i.e. neighborhood parks, pocket parks, common greens, civic plazas, passive parks and active parks). In some cases adjoining residential lots that come up for sale may be the only viable option to fill service area gaps.

# PARKS AND RECREATIONAL FACILITIES

Sources: Town of Vienna





The Community Center is currently undergoing a complete renovation, along with the addition of a new gymnasium towards the rear of the building.

### Community Center

The Community Center, officially opened in 1966, provides residents and visitors access to facilities, technology, programs, and recreational opportunities that enhance the quality of life within the Town. The Community Center offers fitness, wellness, recreation and arts and crafts programs, teen center programming, concerts, theatrical plays, and youth and adult drop-in programming. The Center also provides space for public and private events and community gatherings. Wireless access is also available.

The Community Center also houses the [Teen Center](#), which is intended to provide a structured

and safe environment for teens to grow socially, receive academic support, and participate in physical and recreational activities. The Center conducts teen-centered programming, including arts and crafts, cooking, clubs, workshops, and seasonal events. Over a dozen volunteer programs for teens are offered annually.

The Department of Parks and Recreation is also responsible for coordinating the many special events that are a hallmark of the Town's sense of community. These include the concerts and programs at the Town Green, and support for events such as Viva! Vienna, the Halloween Parade, Oktoberfest, and the Church Street Stroll.



Credit: westwoodcc.com

The Westwood Country Club was established in 1954 and includes a 58,000 square foot club house, 18-hole golf course, tennis courts, swimming pool and a fitness center.

### Private Recreational Facilities

A variety of private recreational facilities are located in the Town. Westwood Country Club is located in the northeastern section of Town, bordering Maple Avenue, and offers full country club amenities, including an 18 hole golf course, tennis facilities, and swimming.

In addition, the southwestern quadrant is home to two summer recreation clubs, Vienna Woods Swim and Tennis Club and Vienna Aquatic Club. George C. Yeonas Park, located in the southwestern quadrant and adjacent to the Town's Southside Park, is a privately owned Little League park with three fields. There are [plans](#) to renovate these fields.

### Fairfax County Parks and Recreational Facilities

Although not located in the Town, four major Fairfax County recreation facilities also are readily accessible to Vienna residents. The closest of these is Nottoway Park, which adjoins the Town along the southwestern edge and offers tennis courts, ball fields, walking trails, picnic facilities, and an historic community house. Oak Marr and Spring Hill recreation centers, in Oakton and McLean respectively, provide full indoor recreational opportunities as well as outdoor facilities. The Meadowlark Gardens, on Beulah Road northeast of the Town, provides 95 acres of natural and landscaped gardens and fields, a visitor center, and walking trails.





### Glyndon Park

Glyndon Park is accessible from both Glyndon Street NE and Beulah Road NE and is comprised of an 11 acre tract of wooded recreation space. The park is complete with a paved walking trail, playground, baseball field, basketball court, two lit tennis courts, restrooms, and picnic pavilions available for rental. A new turf field was installed in 2015.

### Moorefield Park and the Vienna Dog Park

Situated off Nutley Street SW at Courthouse Road SW and Moorefield Road SW, Moorefield Park and the Vienna Dog Park include a play area shaded by mature trees and completely fenced in. Water is available on site and all dogs must be licensed by the Town of Vienna or Fairfax County. The overall area is 9.99 acres, with a smaller fenced portion set aside for the dog park.



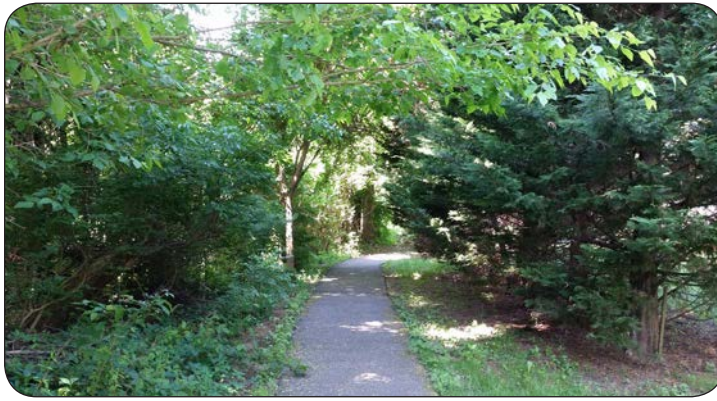
### Southside Park

Home to the Town's annual Fourth of July Fireworks display, Southside Park is a 17 acre multi-use facility. Southside is the host to baseball and softball leagues, and youth football. Two full size softball fields are located at Southside, in addition to sand volleyball courts, basketball courts, playground equipment, and a sheltered area.

### Vienna Town Green

The capstone of Vienna's Parks and Recreation Department, the 2.5 acre Vienna Town Green, is centrally located in the Town's commercial zones. The Town Green is featured on Maple Avenue between Center Street and Park Street and plays host to concerts, picnics, children's activities, and community exhibitions. It is abutted by historic Church Street and the Freeman House and bordered by the W&OD Trail. The Town Green is maintained and known for its seasonal flower displays and lawn areas. The fountain situated front and center on the Maple Avenue side is a memorial to the Nation's veterans. Benches are placed throughout the park. Restrooms and water fountains are available as well. The Town should consider different ways to help activate the Town Green during non-event hours (see [Page 126](#)).





**Wildwood Park**

This 15.65 acre park is located along Wolftrap Creek. It is primarily a natural wooded area with trails and interpretive signage. In 2013, the stream valley underwent restoration as a collaborative project between the Town and Fairfax County. Trails were enhanced with the addition of QR coded F.I.T. trail signs. The signs give participants the opportunity to amplify their workouts by using a smartphone to scan and get video trainer instruction.

**Branch Road Tot Lot**

Located at the intersection of Branch Road and Locust Street SE this maintained playground, designed for ages 2-5, is situated on over a half acre of maintained turf, fronted by a seasonally changing flower bed and bordered by mature trees. The tot lot sits off the road and is fenced-in for added security. Its location is well within walking distance to 2 grocery stores, several eateries, and other locally owned businesses.



**Sarah Walker Mercer Park**

The one acre park is located on Nutley Street NW at the intersection of Knoll Street. Within walking distance to Louise Archer Elementary School and James Madison High School, the park occupies a portion of the former Public Works property yard. The park contains a rain garden, walking paths, and seating. The park honors the late Sarah Walker Mercer, a neighborhood figure often considered the “mother of the neighborhood.” Included in this park is a memorial tree planted to honor Maxine Shelley Turner, a victim in the Virginia Tech shooting tragedy.

**Washington & Old Dominion Railroad Regional Park**

The Washington and Old Dominion Railroad Regional Park sits on the former railroad line (which ended operations in 1968) and was purchased by NOVA Parks. From 1974 to 1988 the park was constructed and built in sections. The entire paved trail is 45 miles long and travels through much of Northern Virginia. The trail allows for walking, running, bicycling, horseback riding, and skating. The portion which goes through Vienna runs through the Southeast and Northeast quadrants and is approximately 2 miles long.





### Peterson Lane Park

Peterson Lane Park is a 5.45 acre park located off Malcolm Road NW and within walking distance to Louise Archer Elementary School and James Madison High School. It is equipped with both walking trails and parking lots. The park contains a basketball court as well as a playground. Peterson Lane Park is jointly owned and operated by the Town of Vienna and the Fairfax County Park Authority.

### Meadow Lane Park

Meadow Lane Park is located in the residential area of Courthouse Road SW. In addition to slides, swings and jungle gyms, the park provides toys for a wide age range. The play area is fenced in for safety and also includes picnic tables and benches. Included within the park's 3.43 acre boundaries are a pavilion (available for rent), restrooms, tennis courts, basketball court, and softball field.



### Salsbury Spring Park

The quarter acre park is located at Lawyers and Windover Roads NW. It is named for Captain H.L. Salsbury the land donor for both the West End and the Sons and Daughters cemeteries. It contains mature trees, a small seating area, and a trickling spring.



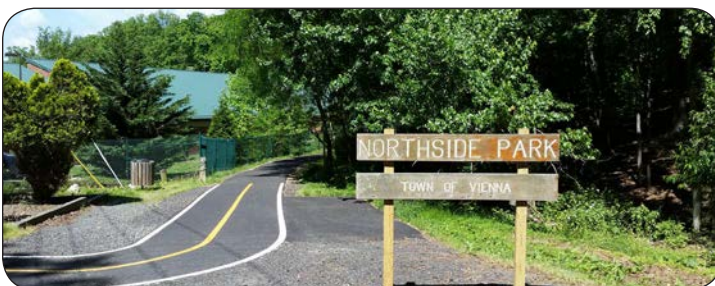
### School Fields

The Town of Vienna also helps operate and maintain additional athletic fields in the Town which are owned by the Fairfax County Public Schools. These include the Cunningham Elementary School fields, Waters Field, and Caffi Field.



### Northside Park

The 26 acre park and conservation zone is criss-crossed with hiking paths for varying ability levels. Northside Park is a location used for spotting wildlife and native flora. Often used by joggers, hikers and dog-walkers, this park is adjacent to and accessible from the W&OD trail.



## HOW TO ACTIVATE THE TOWN GREEN DURING NON-EVENT HOURS



Splash fountains



Credit: AV Design, Flickr.com

Public art (mosaiculture pictured above)



Interactive art elements



Credit: ACDP, Flickr.com

Creative and fun park furniture



## Recreational Programs

The purpose of the Department of Parks and Recreation is to help enrich the lives of Vienna residents of all ages by providing camps, classes, and drop-in activities with a focus on education through workshops, arts, fitness, and sports. These programs are primarily held at the Community Center and the Bowman House.

### Programs

Parks and Recreation Department programs are offered on a quarterly basis: winter, spring, summer and fall. Vienna residents, those who live within the Town corporate limits and pay taxes to the Town, are given priority over non-residents for the first week of registration for each session.

The Department of Parks and Recreation offers numerous programs and classes for children, teens, adults, and mature adults (those 50 years and older). An estimated 110 health and fitness classes were offered in 2013. Listed below are examples of some of the [programs and classes offered](#):

- Club Phoenix After School Program
- Adult Painting and Drawing
- Hatha Yoga
- Adult Pottery

Classes and programs should continue to be aimed at all age groups and should be consistent with the demographics of the Town, as determined by Census data.

**Objective 1 - Maintain high quality parkland and open space and see the acquisition of new space.**

**Implementation Strategies**

- Complete master plans and a park typology for all Town parks and open spaces.
- Maintain high quality of existing parks and open space.
- Pursue possibility of acquiring additional open space.
- Increase efforts to better link parks and open spaces to schools, neighborhoods, commercial areas, and transit services.



Glyndon Park provides residents with walking paths and recreational fields

**Objective 2 - Maintain or improve existing facilities and programs.**

**Implementation Strategies**

- Continue to evaluate the appropriateness of programming at all parks and facilities.
- Promote the Town's recreational opportunities through a variety of communication tools and other forms of outreach.
- Maintain cooperative relationships with youth and adult sports leagues regarding use and maintenance of Town facilities.
- Maintain support for the Teen Center and other age-direct recreational activities.
- Hold Town events and festivals, and identify opportunities for new events and partnerships.
- Pursue additional indoor recreational facilities, such as basketball courts and swimming pools.
- Continue to coordinate with aligned agencies, including Fairfax County Park Authority and NOVA Parks, regarding shared facilities and other opportunities for collaboration.



The Fourth of July Fireworks Show is an annual event that attracts hundreds of residents

**Objective 3 - Ensure on a continuing basis, the provision of adequate open space for health, recreation and environmental purposes.**

### Implementation Strategies

- Upgrade and maintain Town parks, fields, and other facilities as appropriate.
- Prioritize the renovation and expansion of the Community Center.
- Improve access and reduce barriers for park and recreation facilities.
- Incorporate public open space opportunities into the Town's targeted redevelopment areas, including the Church Street and Maple Avenue corridors.
- Ensure that the park and recreational system, facilities, and lands are protected from direct development pressures, changes in land use, or incompatible redevelopment.
- Examine the current zoning of Town-owned parks, and where appropriate, recreational property owned by Fairfax County or regional authorities.



The Community Center be undergoing a renovation and an expansion over the next couple of years

**Objective 4 - Improve the access of parks and open areas to Town residents.**

### Implementation Strategies

- Study the 1,500 foot radii service area gaps to look at ways to acquire additional potential future park sites.
- Plan for the distribution of parks and open spaces throughout the Town.
- Include natural play areas as parks are master planned.



Salsbury Spring Park, albeit a small park, provides some open space in the Historic District

This page was intentionally left blank.



## Indicators

- Increase in participants in recreational programs
- Increase in the amount of accessible public parkland
- Increase in non-event attendance at the Town's parks